

Purchase  
Orders  
Processed

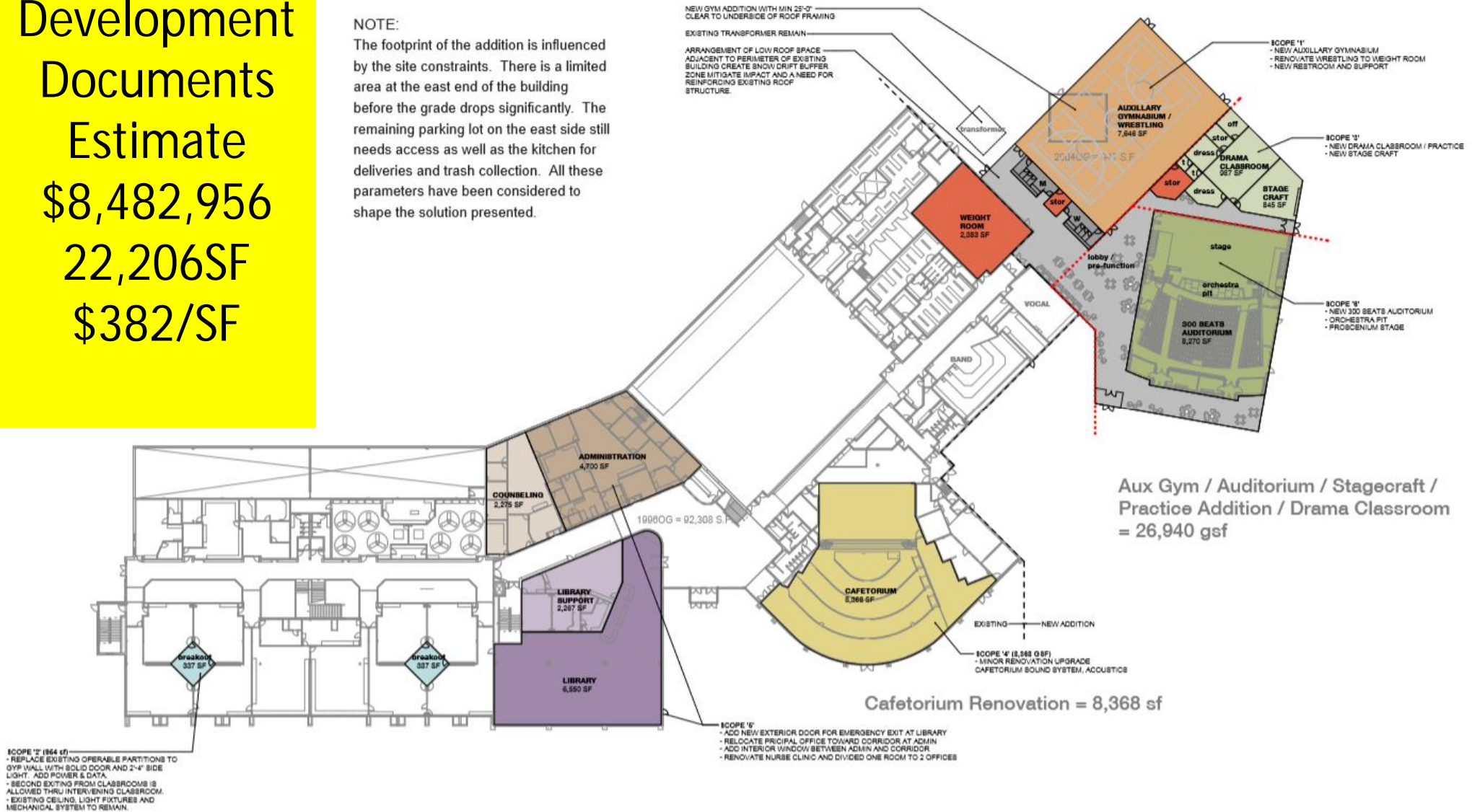
	<b>PO amount</b>
<b>Addenbrooke Academy</b>	<b>\$1,043,172.17</b>
<b>Jefferson Aca Building Addition</b>	<b>\$6,154,299.36</b>
<b>Charter Admin</b>	<b>\$750,000.00</b>
<b>Lincoln Aca</b>	<b>\$302,633.00</b>
<b>Mountain Phoenix</b>	<b>\$324,000.00</b>
<b>Rocky Mountain Deaf School</b>	<b>\$391,430.00</b>
<b>Excel Academy</b>	<b>\$262,900.75</b>
<b>Compass Montessori WR</b>	<b>\$166,040.00</b>
<b>Collegiate Academy</b>	<b>\$234,555.00</b>
	<b>\$9,629,030.28</b>

**Charter Schools – Cooperative Strategies**

HIGH SCHOOLS  
Starting Construction  
Early 2020

Design  
Development  
Documents  
Estimate  
\$8,482,956  
22,206SF  
\$382/SF

NOTE:  
The footprint of the addition is influenced by the site constraints. There is a limited area at the east end of the building before the grade drops significantly. The remaining parking lot on the east side still needs access as well as the kitchen for deliveries and trash collection. All these parameters have been considered to shape the solution presented.



Conifer HS – Addition  
Cannon – CMGC FCI

Construction Documents Estimate  
\$26,300,000  
169,235SF  
\$155.4/SF



**Alameda HS – Addition**  
Wold – CMGC Phipps

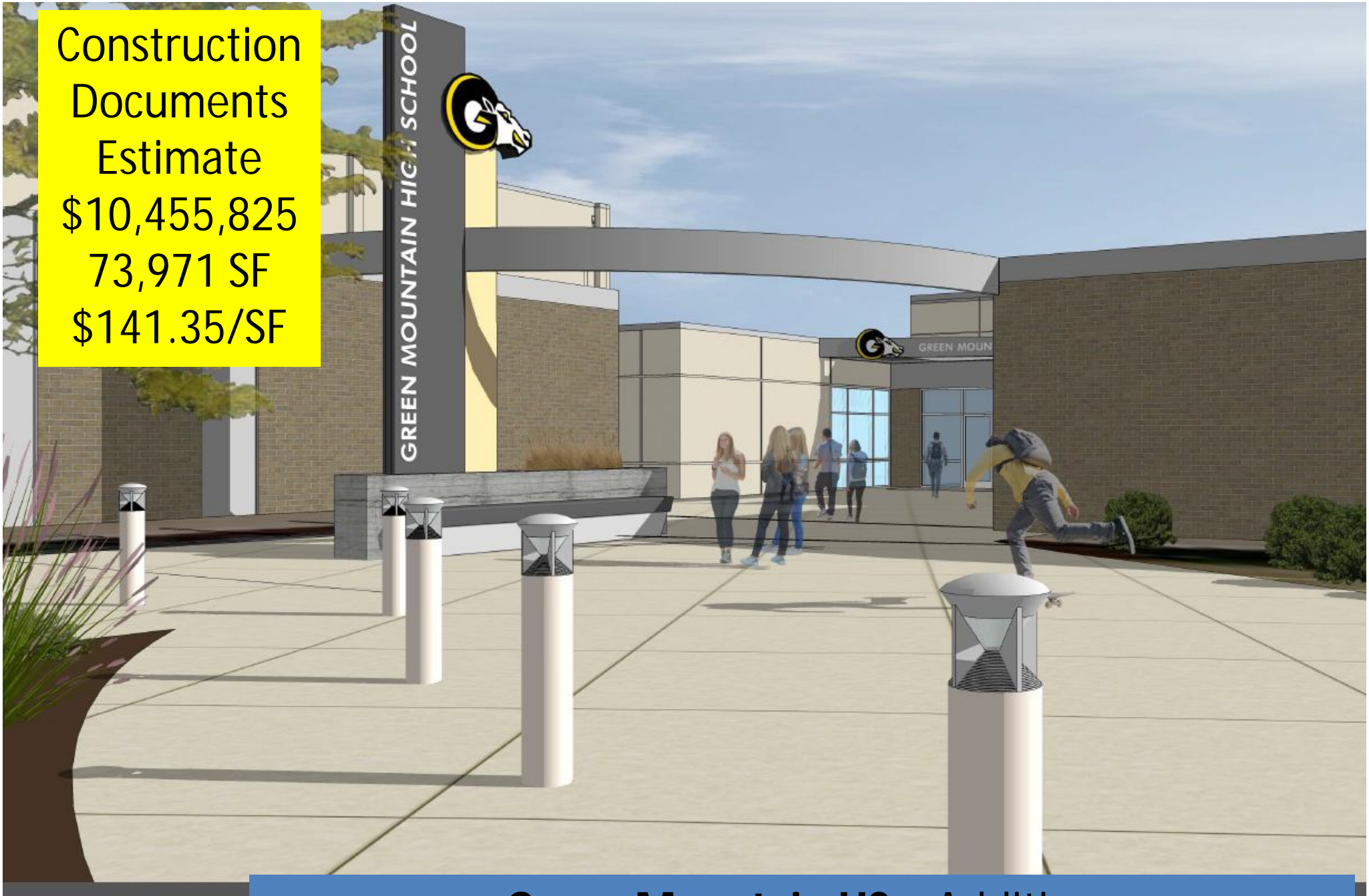


Construction  
Documents  
Estimate  
\$14,185,271  
124,765SF  
\$114/SF



**Columbine HS – Addition**  
Eidos – CMGC Swinerton

Construction  
Documents  
Estimate  
\$10,455,825  
73,971 SF  
\$141.35/SF

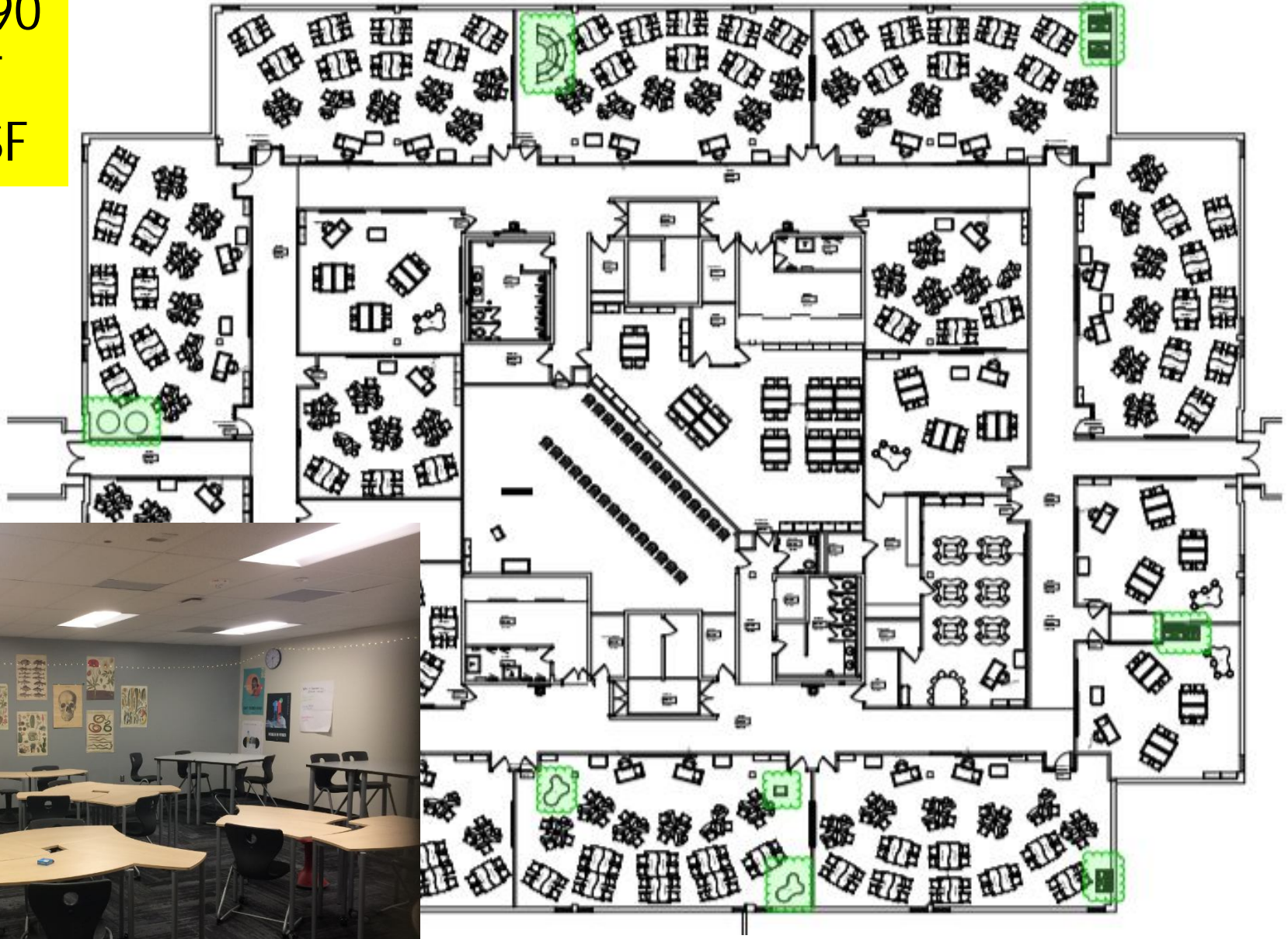


**Green Mountain HS – Addition**  
MOA – CMGC GE Johnson



Construction  
\$12,971,690  
49,194SF  
\$263.68/SF

Complete – Phase I



**Arvada HS – Addition – (Phase II)**  
HCM – CMGC Saunders

# 2020 - PROJECTS



Complete



**Coronado ES – Gym Floor**  
OZ – Colorado Floorworks

Kyffin ES  
Complete

Stevens ES  
90% Complete

Peck ES  
90% Complete

Secrest ES  
Glass ordered



## Security Glass Installation - Elementary School

4 Schools –



Construction  
\$4,589,755  
15,137SF  
\$303.21/SF

May 2020  
Completion



**Three Creeks K8 – Addition –  
HCM – CMGC Phipps**

Construction  
\$6,694,785.  
16,890SF  
\$396.38/SF

August 2020  
Completion



**Wilmot ES – Addition**  
DLR – CMGC Himmelman



Construction  
\$16,736,000  
58,537 SF  
\$286/SF

Dec. 2020  
Completion



**Kendrick Lakes ES – Replacement**  
Larson Incitti – Roche

# Summer 2020 Construction Documents



\$2,443,643

ARVADA WEST HIGH SCHOOL  
11595 ALLENDALE DRIVE, ARVADA, CO 80004



\$2,985,029

COLUMBINE HIGH SCHOOL  
6201 S PIERCE STREET, LITTLETON, CO 80123



\$2,501,031

GOLDEN HIGH SCHOOL  
701 24TH STREET, GOLDEN, CO 80401



\$4,027,821

GREEN MOUNTAIN HIGH SCHOOL  
13175 WEST GREEN MOUNTAIN DRIVE, LAKEWOOD, CO 80228



\$2,971,103

POMONA HIGH SCHOOL  
8101 WEST POMONA DRIVE, ARVADA, CO 80005



\$3,014,278

STANDLEY LAKE HIGH SCHOOL  
9300 WEST 104TH AVENUE, WESTMINSTER, CO 80021



## 2020 Field Improvements

Awest HS, Columbine HS, Golden HS

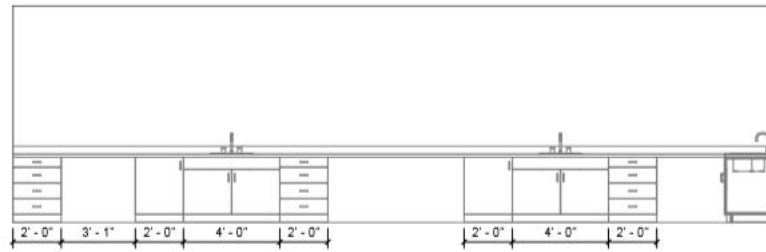
Green Mountain HS, Pomona HS, Standley Lake HS

HCM – CMGC ECI

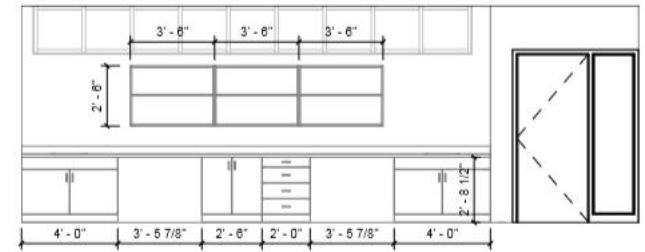


# Summer 2020 Design Development Documents

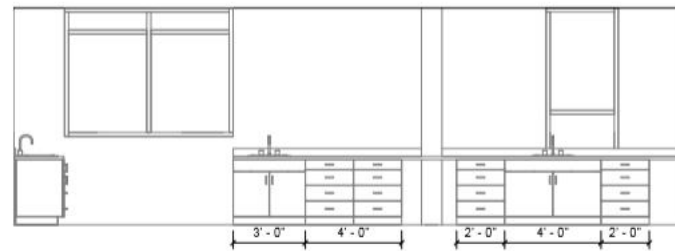
Estimate  
\$1,366,534  
17,000 SF  
\$80/SF



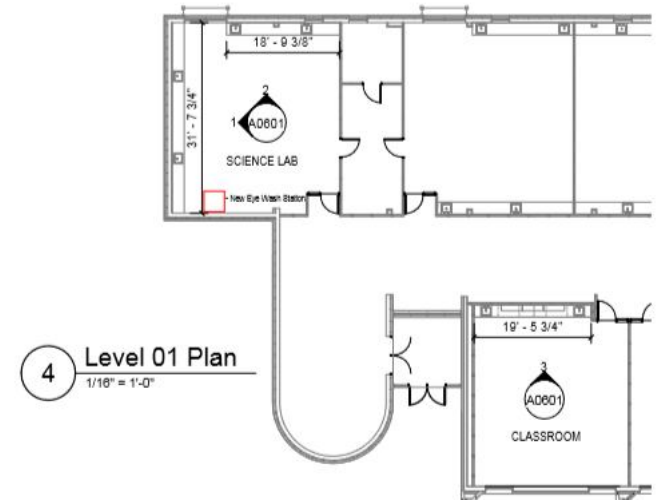
1 Science Lab Casework - West Wall  
1/4" = 1'-0" • Similar at four classrooms



3 Classroom Casework - Typical  
1/4" = 1'-0" • Similar at twelve classrooms



2 Science Lab Casework - North Wall  
1/4" = 1'-0" • Similar at four classrooms



4 Level 01 Plan  
1/16" = 1'-0"

West Jefferson MS – Upgrades  
Cannon – CMGC FCI

Summer 2020

Green Mtn ES  
\$739,250

Lasley ES  
\$255,700

Bid 12/10/19



**DW Roofing I** – Green Mtn ES, Lasley ES  
WJE – CMC & United Materials



Summer 2020

Golden HS  
\$434,930

Bid 12/12/19



**Chiller Replacement – Golden HS**  
Columbine – K&M

Summer 2020

Patterson ES  
\$467,489

Parr ES  
\$617,180

Bid 1/07/20



**DW Roofing I Part two – Patterson ES, Par ES  
WJE –United Materials, Flynn**

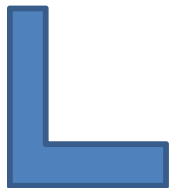
Summer 2020

\$1,636,479.00

Bid 1/13/20



**DW Mechanical** – Stott RTU , Ryan RTU ,  
Patterson (AHU, Boilers)  
Columbine - Braconier



Summer 2020

\$193,082 KES

\$220,960 CMS

EHS

Bid 2/5/20



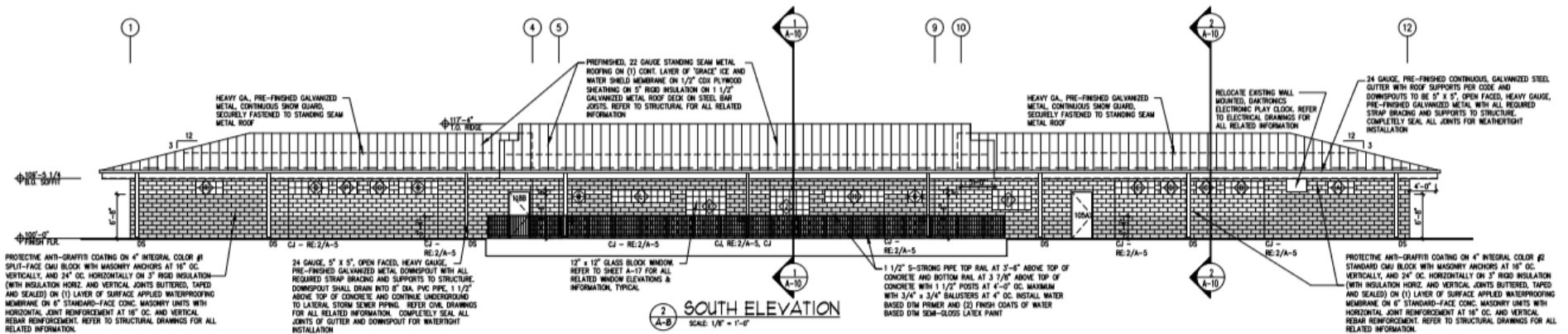
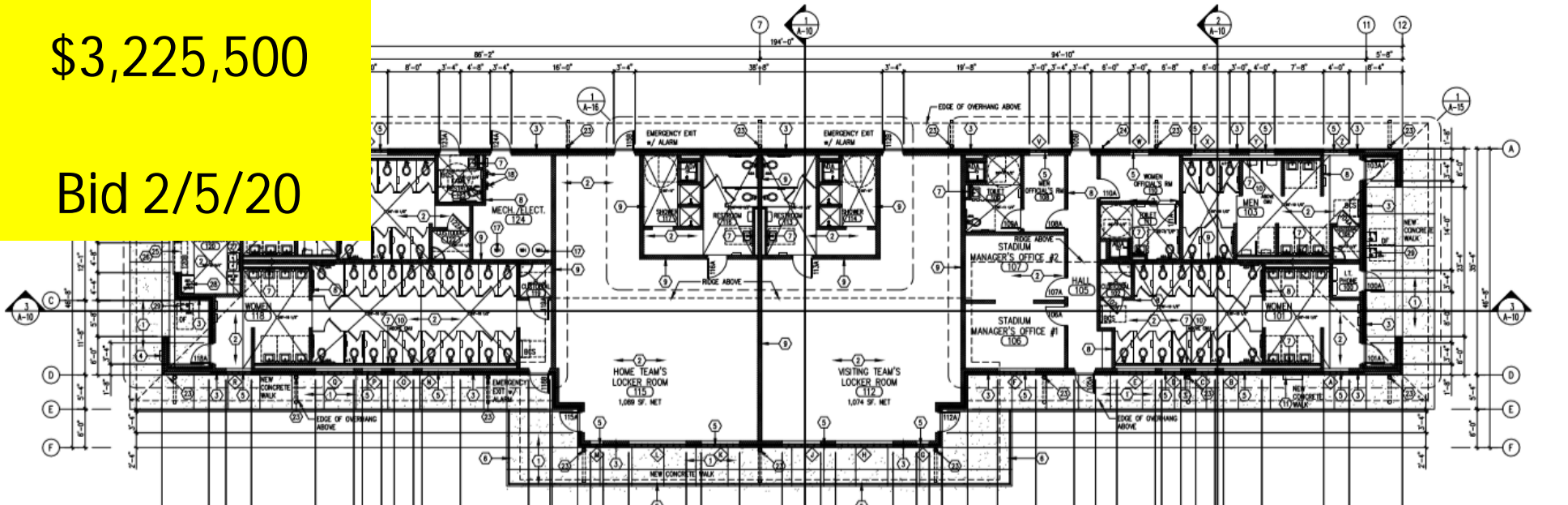
**DW Roofing II** – Kullerstrand ES, Carmody MS,  
Evergreen HS  
Rooftech – TBD



Summer 2020

\$3,225,500

Bid 2/5/20



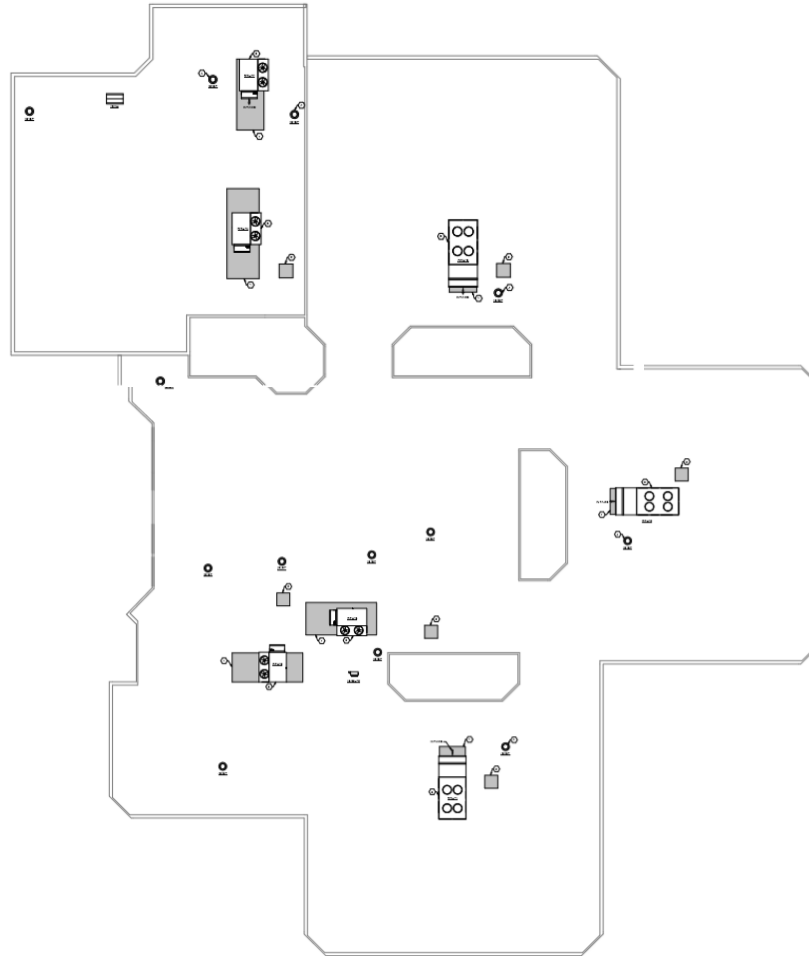
Trailblazer – Locker Room & Press Box  
Mellin & Assoc. – TBD

# Summer 2020

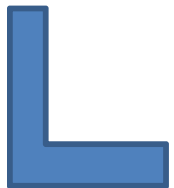
Location	Description	A/E	Contractor	H Budget	Variance	Bid
DW Mech	3 ~ Schools - <b>Stott ,Ryan</b> Boiler ahu controls, <b>Patterson</b> AHU Boiler,	Columbine	Braconier	\$1,588,162.00	-\$48,317.00	\$1,636,479.00
Golden HS	Chiller Replacement	Columbine	K&M	\$600,000.00	\$165,070.00	\$434,930.00
Trailblazer Stadium	Trailblazer Stadium Efficiency & Future Ready	Mellin & Assoc	W E O'neal	\$3,374,029.00	\$148,529.00	\$3,225,500.00
DW Roofing II	<b>Kullerstrand</b>	<b>Roof Tech</b>	Graubau	\$265,666.00	\$72,584.00	\$193,082.00
DW Roofing II	<b>Carmody</b>	<b>Roof Tech</b>	B&M Roofing	\$366,551.00	\$145,591.00	\$220,960.00
DW Roofing I	Patterson ES, Parr ES	WJE	United Materials Flynn	\$1,127,957.00	\$43,288.00	\$1,084,669.00
DW Roofing I	Green Mountain ES	WJE	CMC	\$739,250.00	\$0.00	\$739,250.00
DW Roofing I	Lasley ES (Base Bid) A	WJE	United Materials	\$343,200.00	\$87,500.00	\$255,700.00

## 2020 Bids

Summer 2020  
Bids 2/13/20

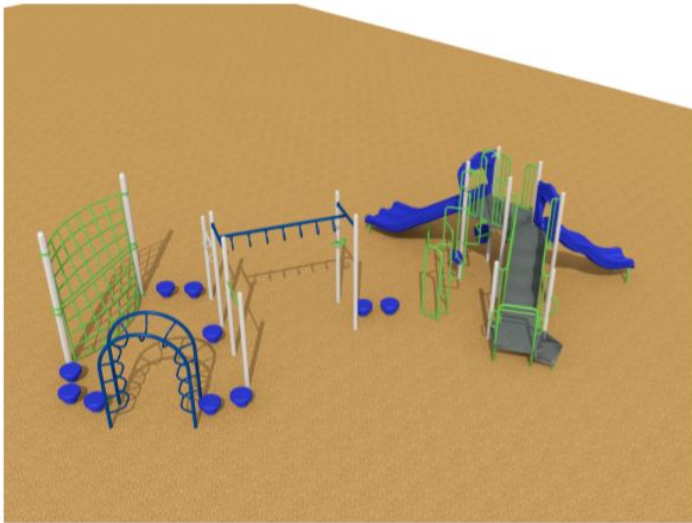


**AHU Replacement - Westridge ES**  
Branch Pattern - TBD





# Summer 2020 Bids 2/25/20



1 KENDALLVUE PLAY STRUCTURE

Scale: NTS



1 REVOLUTION SPINNER - LITTLE TIKES



2 SPIRAL SLIDE - LITTLE TIKES

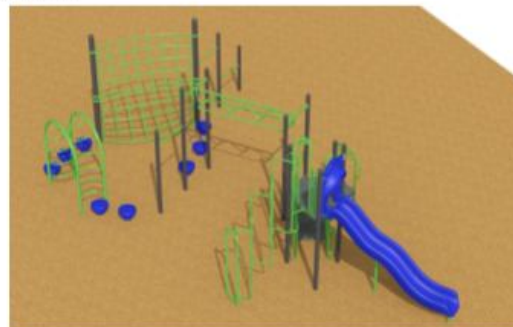


3 TEAM TOTTER - LITTLE TIKES



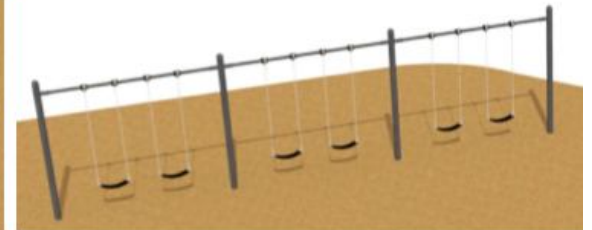
1 GAMETIME PLAY EQUIPMENT AT FLETCHER MILLER SCHOOL

Scale: Not To Scale



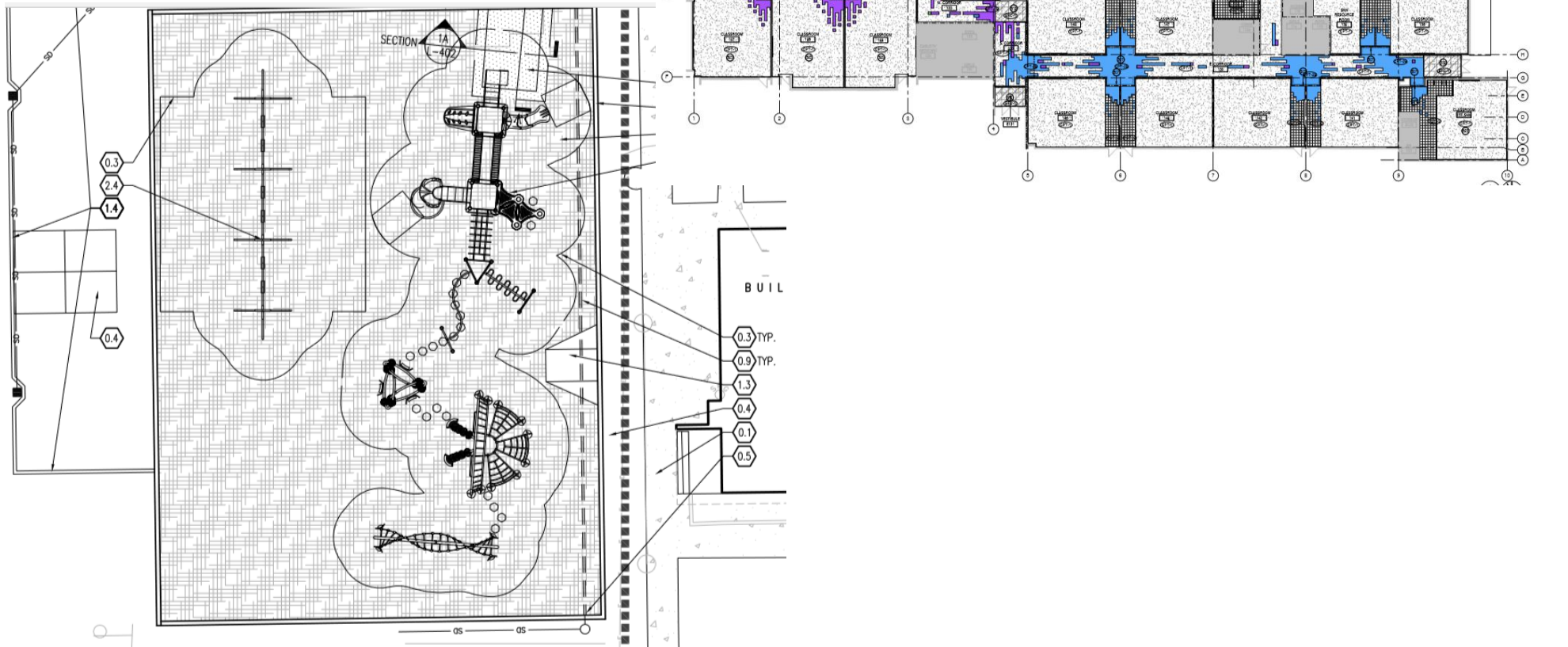
2 LITTLE TIKES PLAY EQUIPMENT AT SHERIDAN GREEN ELEMENTARY SCHOOL

Scale: Not To Scale



**DW Playgrounds (9)**– Allendale , Stott , Vanderhoof,  
Sheridan Green , Fletcher Miller, ,Westridge,  
Kendallvue, Dutch Creek, Stony Creek  
Design Concepts – TBD

Summer 2020  
Bids 2/28/20



**Belmar ES, Eiber ES – Upgrades**  
**AMD – TBD**



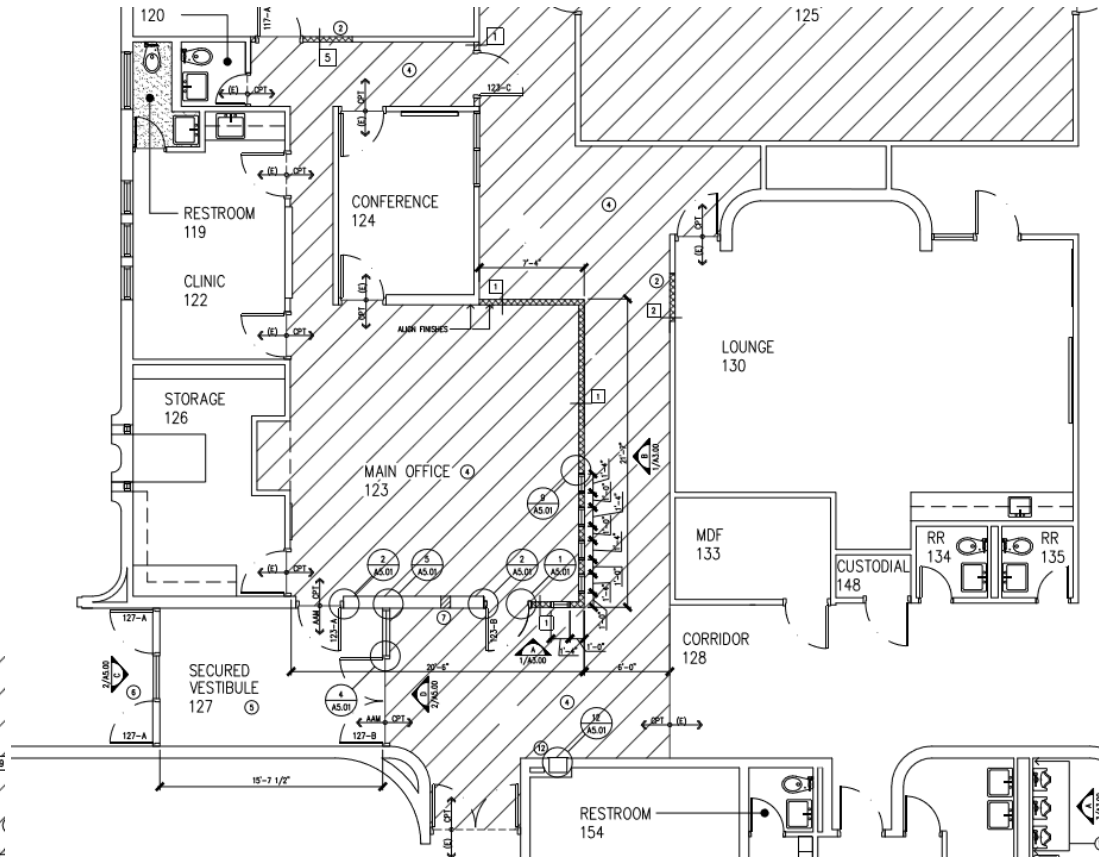
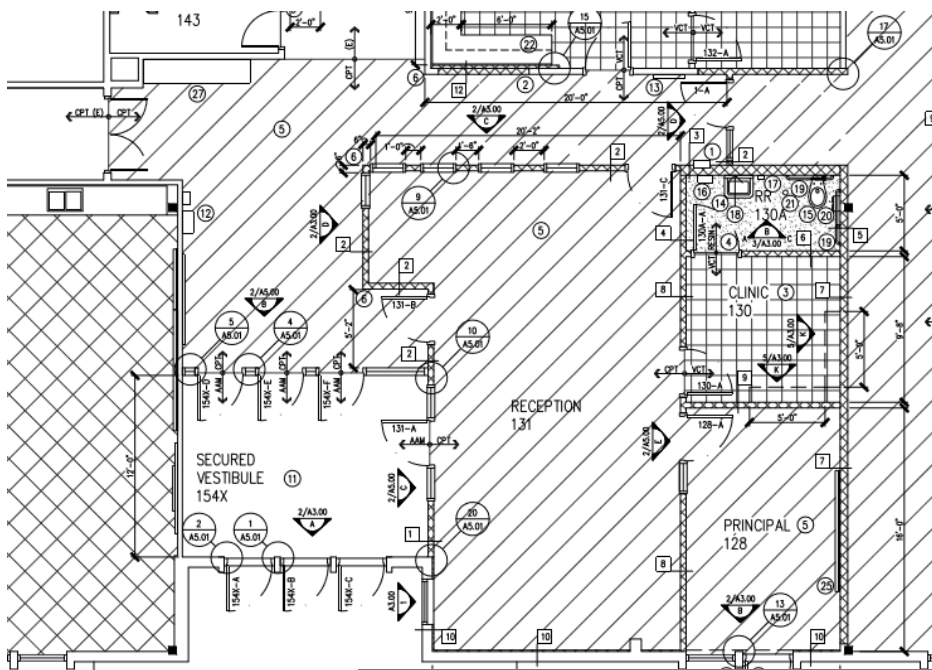
Summer 2020  
Bids 3/4/20



**Arvada K8, Hackberry Hill ES – Upgrades**  
RTA – TBD



Summer 2020  
Bids 3/5/20



**Green Gables ES, Hutchinson ES – Upgrades**  
Sybazz – TBD

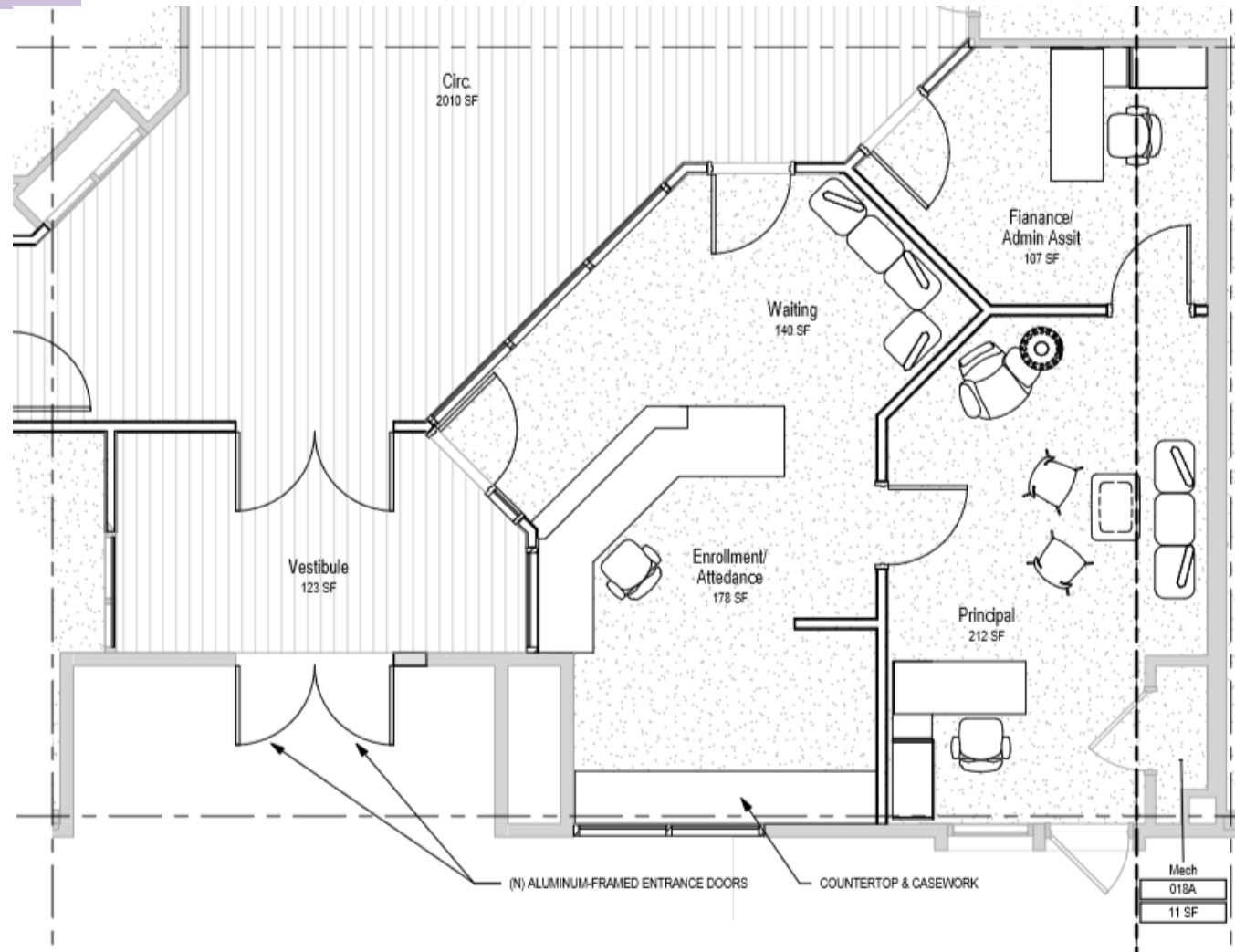
Summer 2020  
Bids 3/5/20



**DW Paving I** – Columbine Hills, Everitt MS, Lawrence  
Dadey – TBD



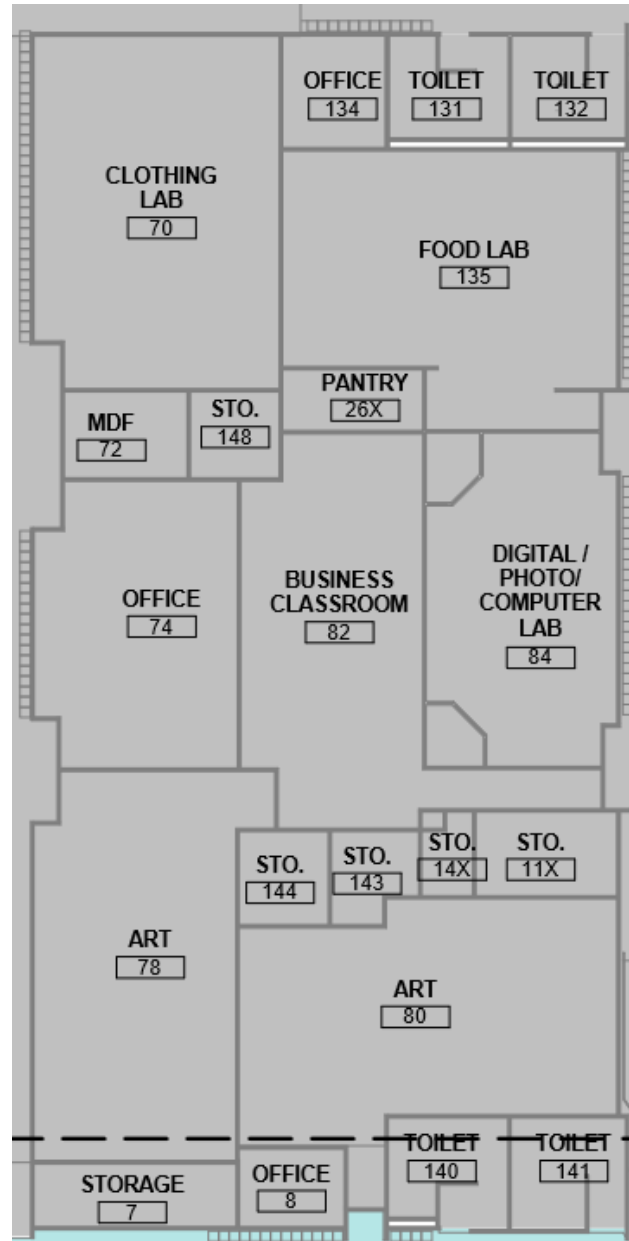
Summer 2020  
Bids 3/10/20



**Dutch Creek ES – Upgrades**  
Cunningham Group – TBD

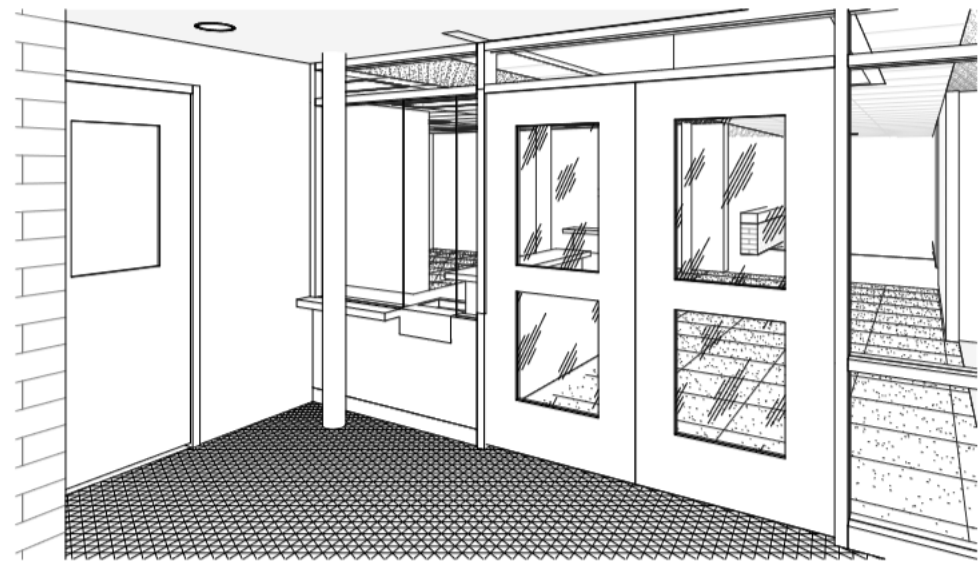
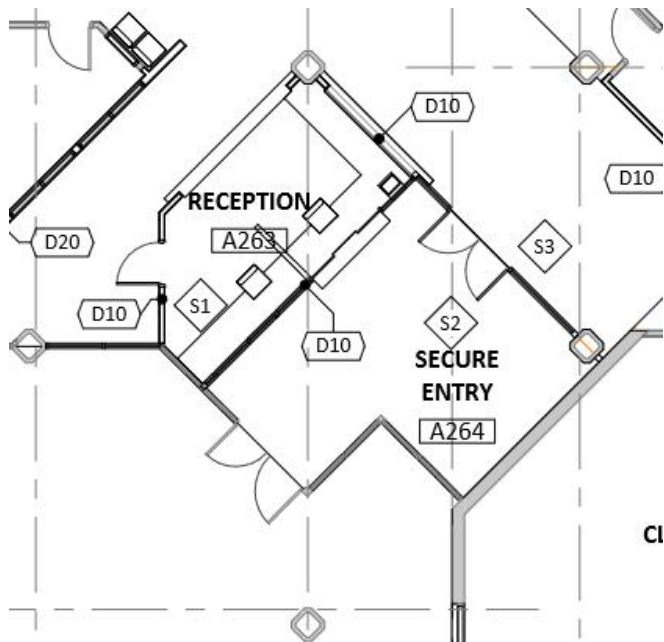
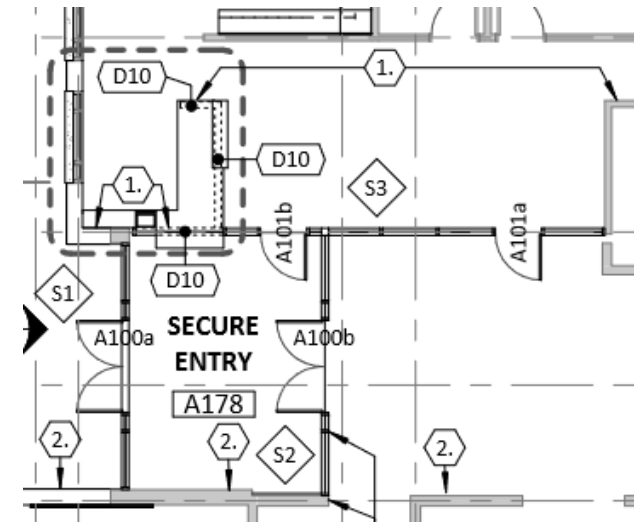
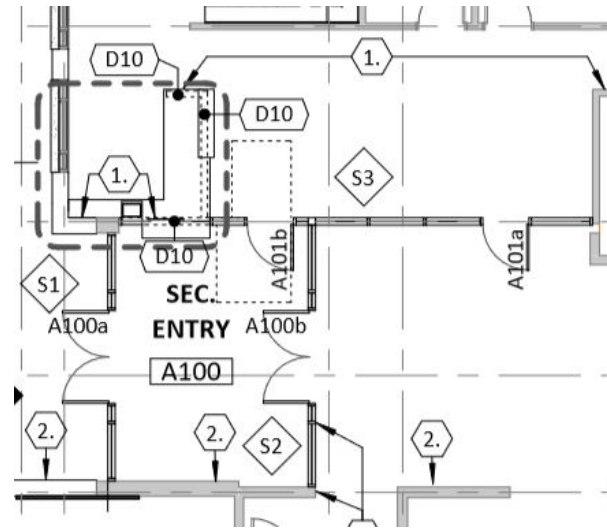


Summer 2020  
Bids 3/10/20



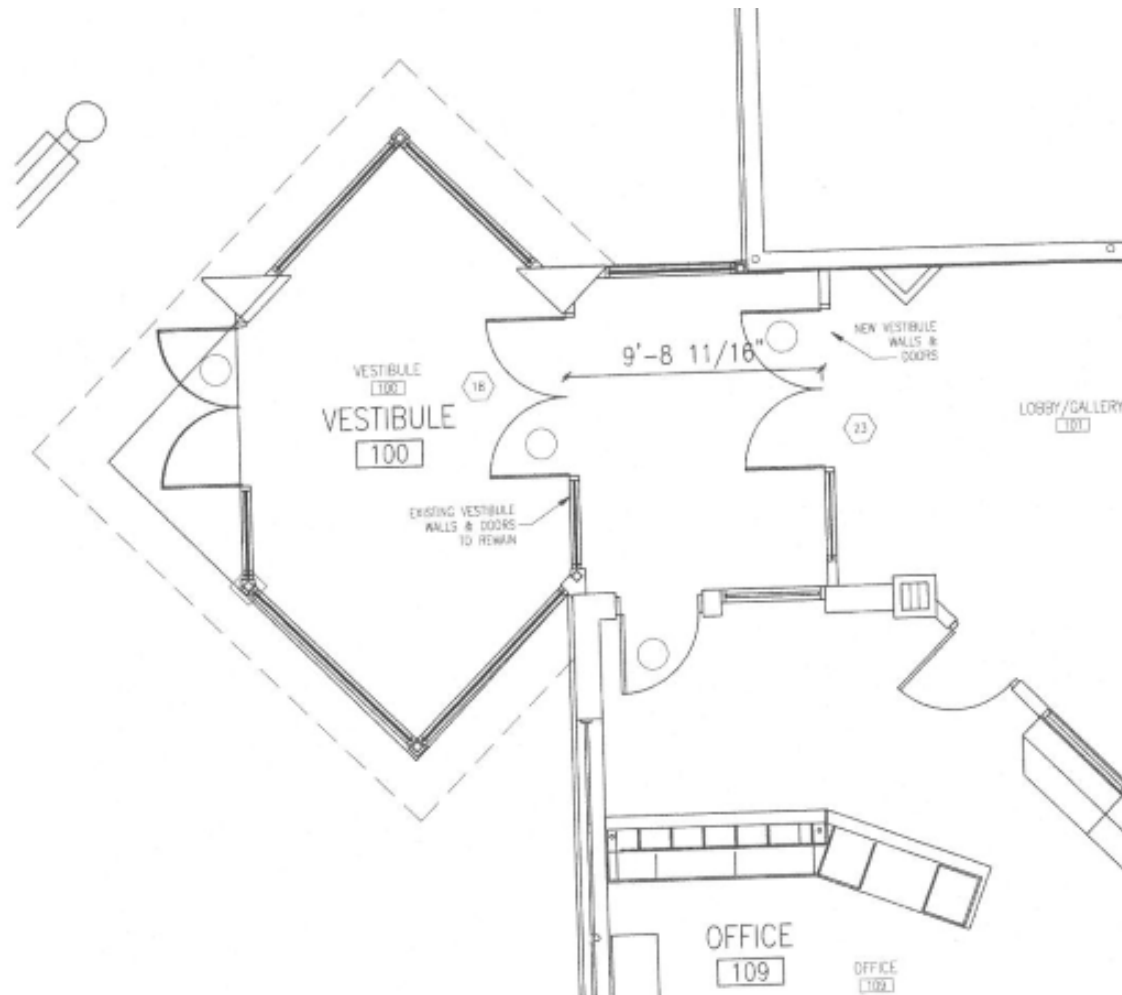
**Ken Caryl** – Signage & FACS Room Upgrades  
HCM – TBD

Summer 2020  
Bids 3/12/20



**Adams ES, Lukas ES, Semper ES, Witt – Upgrades  
RB+B – TBD**

Summer 2020  
Bids 3/17/20



**Fremont ES – Upgrades**  
Jordin – TBD



Summer 2020  
Bids 3/18/20



**DW Paving II** – Bradford Int, Ryan, Mitchell, Shelton  
JVA – TBD

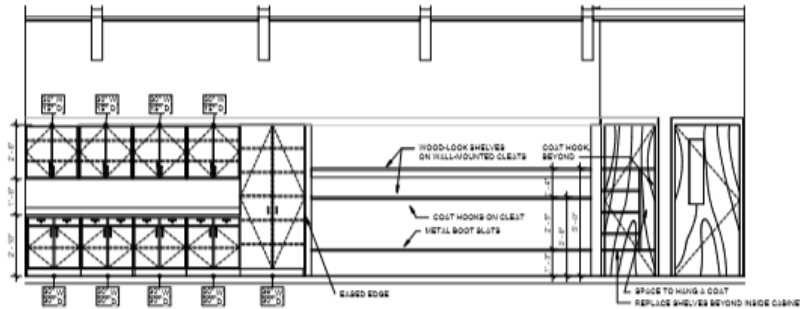


Summer 2020  
Bids 3/19/20

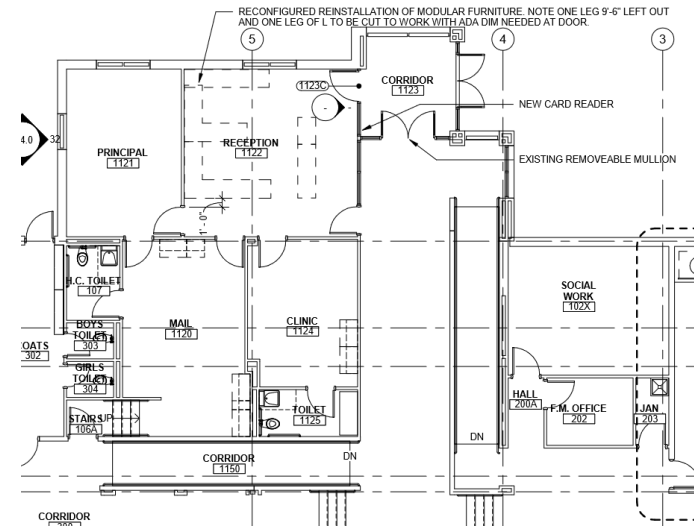
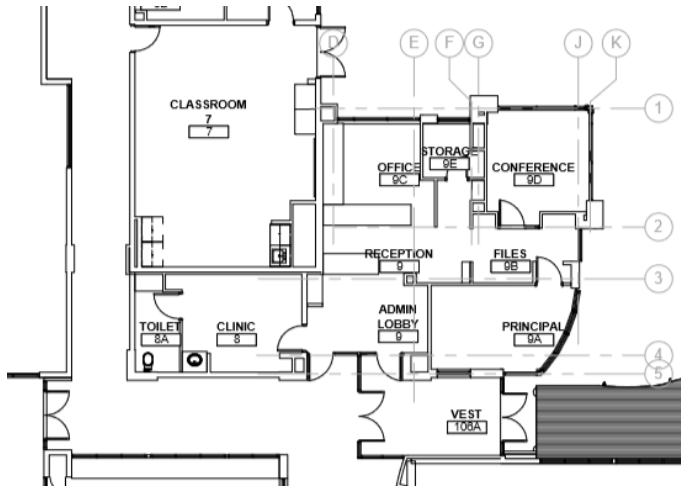
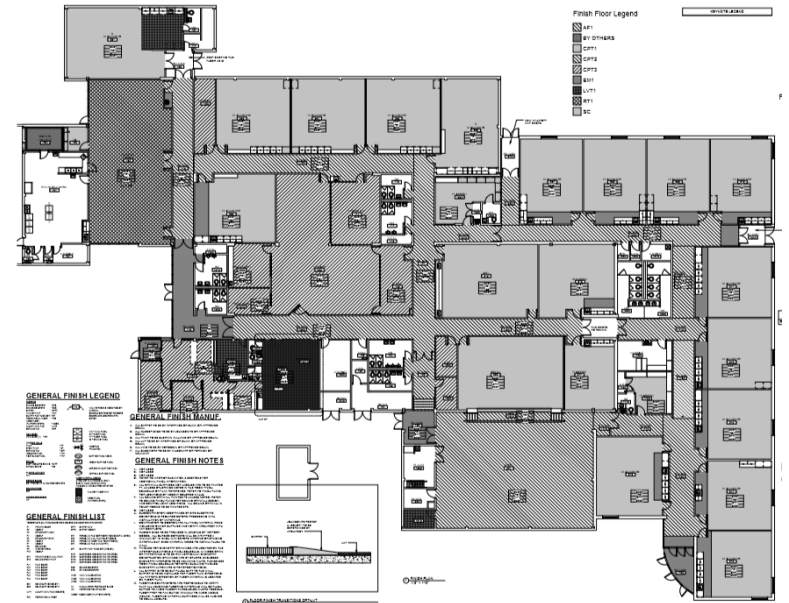


**DW Flooring** - Fletcher Miller, Lasley ES,  
Free Horizon & Fitzmorris  
Farnsworth Group – TBD

# Summer 2020 Bids 3/19/20



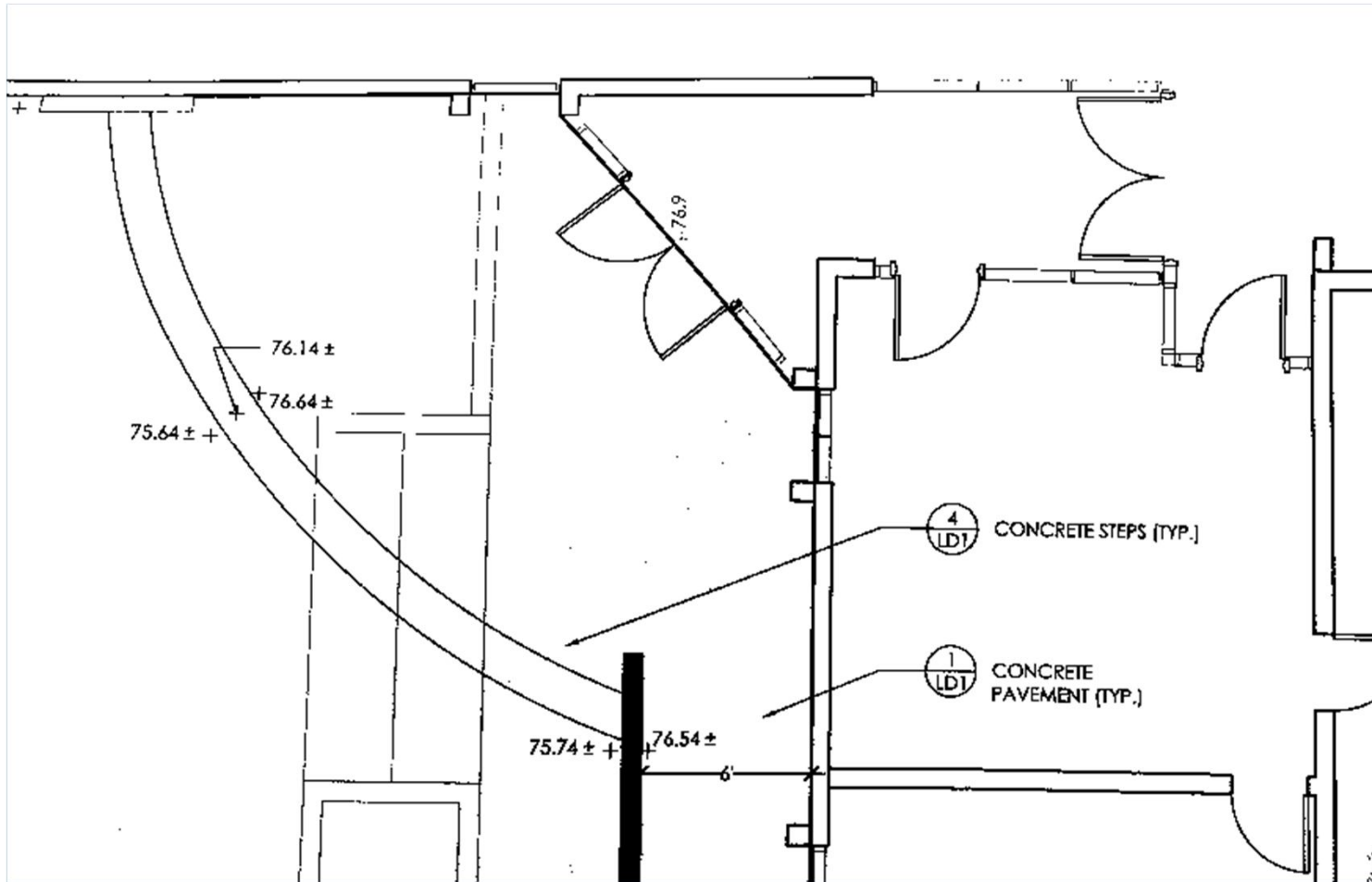
CLASSROOM 212 NORTH  
3/19/20



**Foothills ES, Ralston ES, Vivian ES, Welchester ES**  
Upgrades  
CRP – TBD

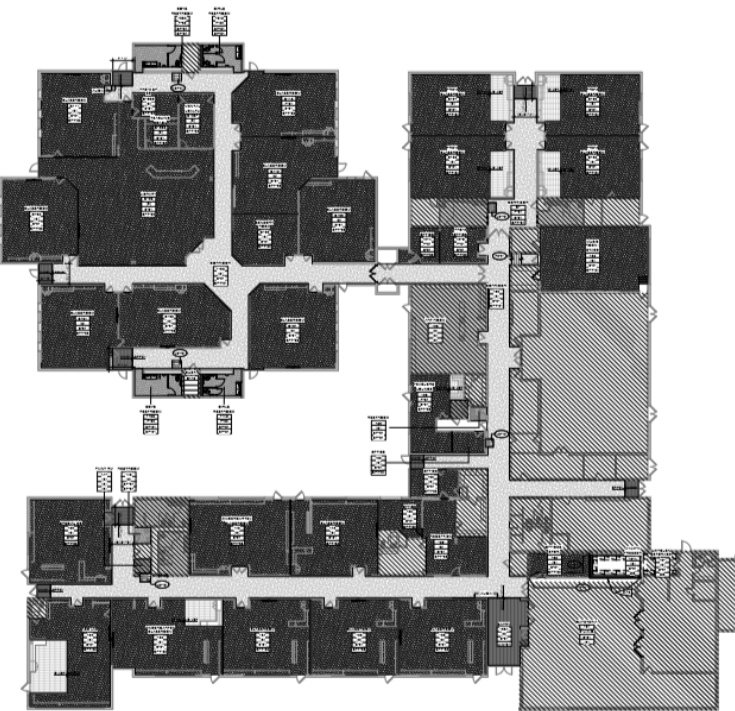
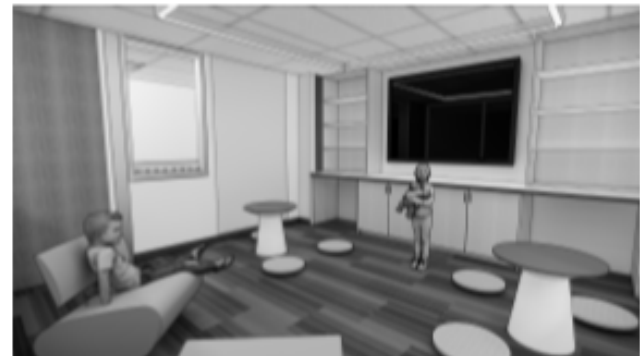
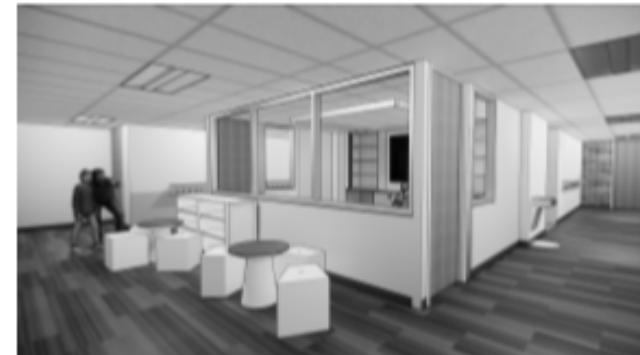


Summer 2020  
Bids 3/25/20



**Stober ES Upgrades**  
LOA – TBD

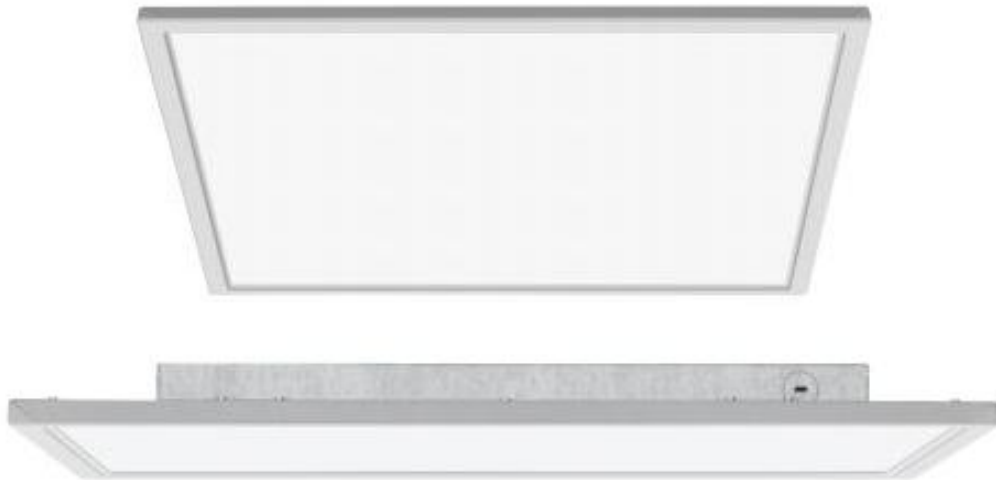
Summer 2020  
Bids 4/2/20



**Columbine Hills ES, Coronado ES – Upgrades**  
OZ – TBD

Design  
Development  
Documents

Summer & School  
Year work



1. Columbine Hills ES
2. Deane ES
3. Devinny ES
4. Dennison ES
5. Fitzmorris ES
6. Kullerstrand ES
7. Lasley ES
8. Maple Grove ES
9. Patterson  
International
10. Peck ES
11. Powderhorn ES
12. Ryan ES
13. Secrest ES
14. Sheridan Green ES
15. Stott ES
16. Vanderhoof ES
17. Westgate ES
18. Westridge ES

**DW LED - 18 Schools**  
Ackerman – CMGC Weifield

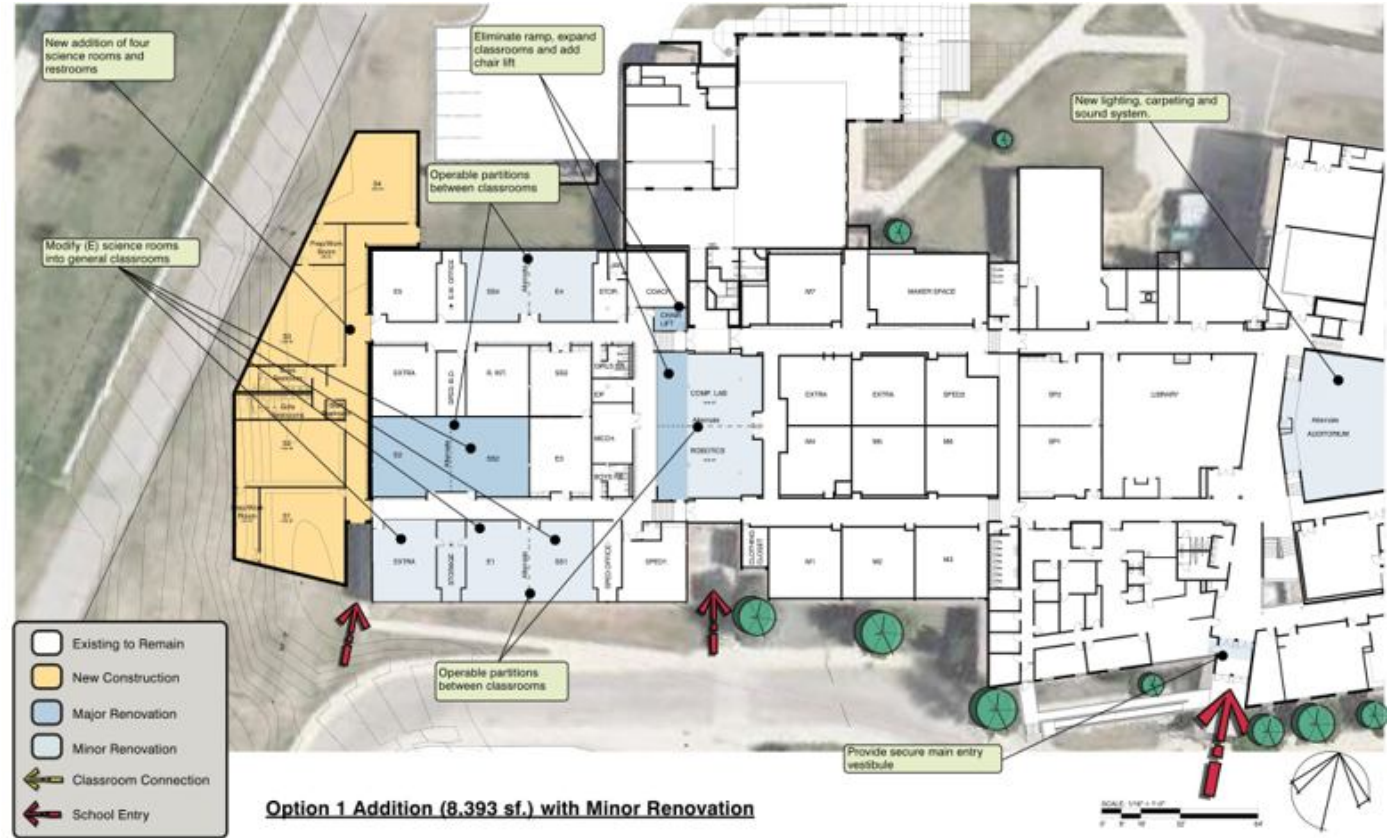


# New Construction and ADDITIONS

Start

Summer / Fall

# Design Development



**Bell MS – 1 Story - 4 Classroom Addition**  
Eidos – Contractor TBD



# Design Development



**CTE South** – New Building  
HCM – Contractor TBD

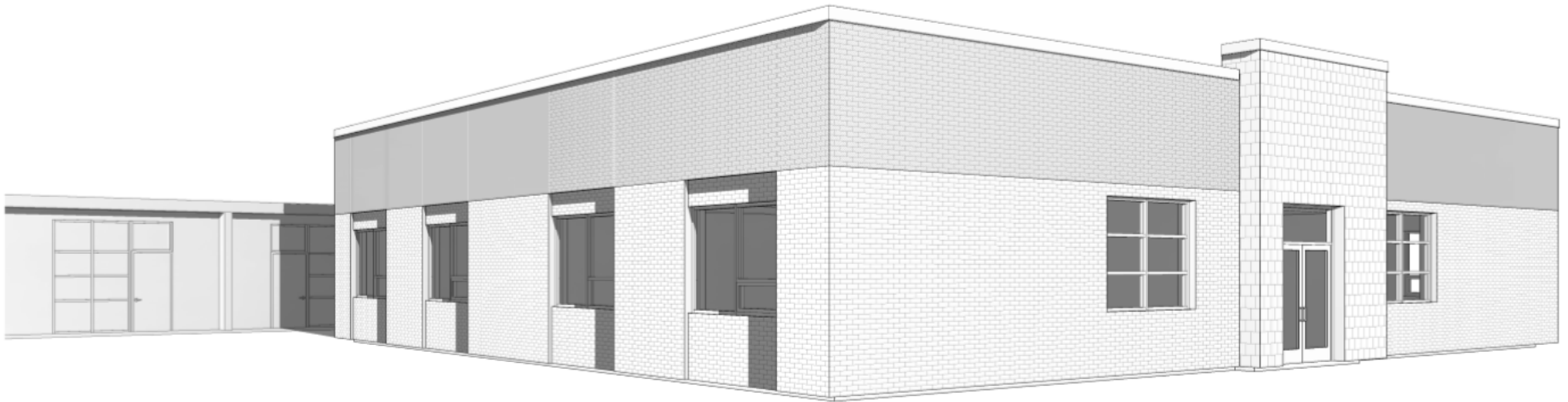


# Design Development



**Jefferson HS – Aux Gym Addition**  
**MOA – Haselden**

# Design Development



**Lumberg ES – 4 CR Addition**  
MOA – CMGC Haselden

# Design Development



**Manning Opt – 1 Story - 7 Classroom Addition**  
AMD – Contractor TBD



# Design Development



**Wayne Carle – 2 Story – 8 Classroom Addition**  
AMD – Contractor TBD

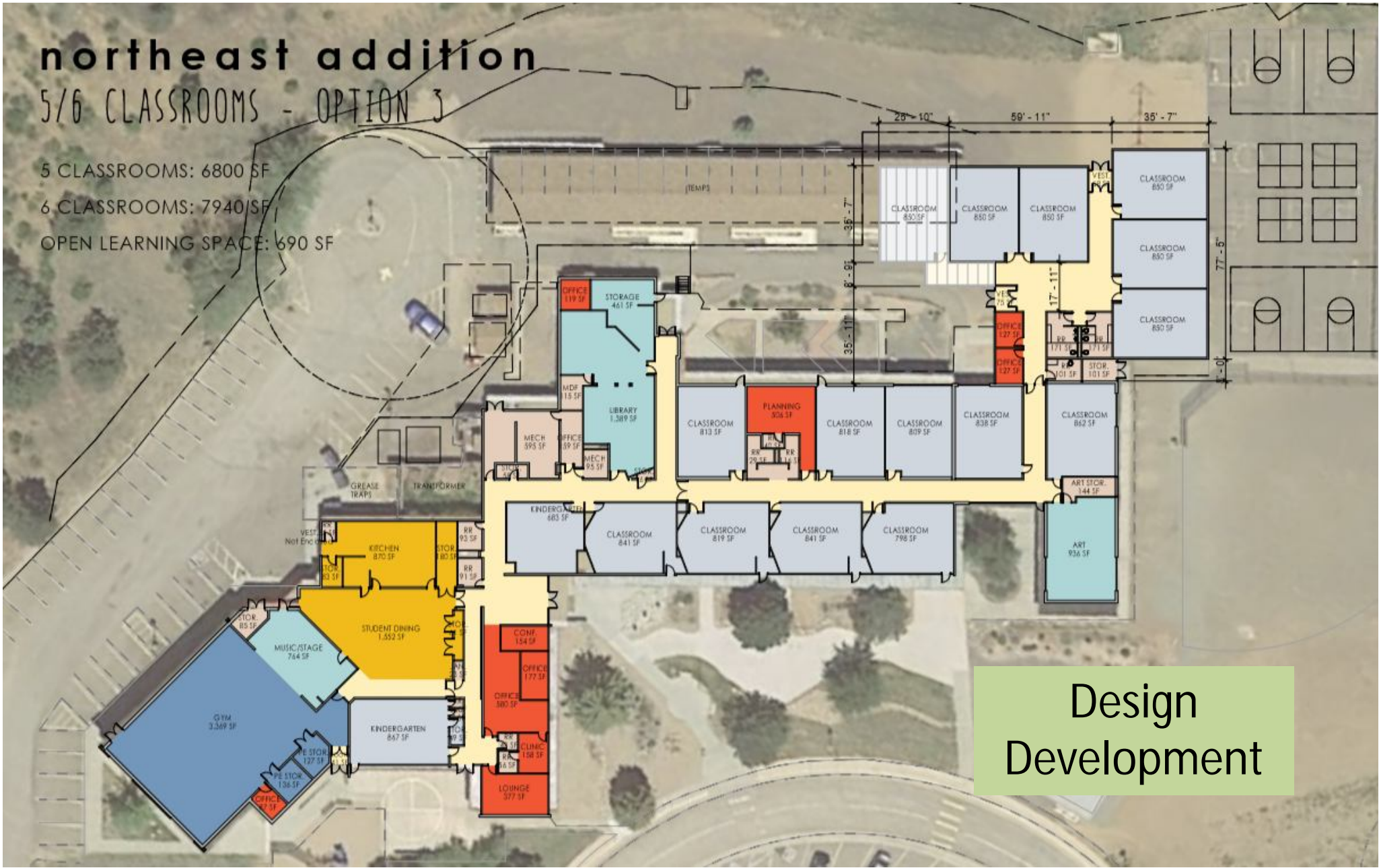
# northeast addition

## 5/6 CLASSROOMS - OPTION 3

5 CLASSROOMS: 6800 SF

6 CLASSROOMS: 7940 SF

OPEN LEARNING SPACE: 690 SF



Design Development

**Parmalee ES – 1 Story – 5/6 Classroom Addition**  
**OZ – Contractor TBD**



Construction Documents Estimate  
\$26,300,000  
169,235SF  
\$155.4/SF



**Alameda HS – Addition**  
Wold – CMGC Phipps



Construction  
Documents  
Estimate  
\$14,185,271  
124,765SF  
\$114/SF



**Columbine HS – Addition**  
Eidos – CMGC Swinerton

# Summer 2020 Construction Documents



\$2,443,643

ARVADA WEST HIGH SCHOOL  
11595 ALLENDALE DRIVE, ARVADA, CO 80004



\$2,985,029

COLUMBINE HIGH SCHOOL  
6201 S PIERCE STREET, LITTLETON, CO 80123



\$2,501,031

GOLDEN HIGH SCHOOL  
701 24TH STREET, GOLDEN, CO 80401



\$4,027,821

GREEN MOUNTAIN HIGH SCHOOL  
13175 WEST GREEN MOUNTAIN DRIVE, LAKEWOOD, CO 80228



\$2,971,103

POMONA HIGH SCHOOL  
8101 WEST POMONA DRIVE, ARVADA, CO 80005



\$3,014,278

STANDLEY LAKE HIGH SCHOOL  
9300 WEST 104TH AVENUE, WESTMINSTER, CO 80021



## 2020 Field Improvements

Awest HS, Columbine HS, Golden HS

Green Mountain HS, Pomona HS, Standley Lake HS

HCM – CMGC ECI



## 2018 BOND PROGRAM COMMUNICATIONS UPDATE CAPITAL ASSET ADVISORY COMMITTEE FEBRUARY 2020

### COMPLETED WORK:

- Wrote and published [looking forward to 2020 construction](#):
  - Shared in Feb. Chalk talk and posted on Jeffcobuilds.org
- Held Arvada Groundbreaking event
  - The [groundbreaking video](#) was shared on Jeffco social and website

### Website analytics:

Dates: Jan. 8 - Feb. 5

Jeffcobuilds.org and all pages with "jeffcobuilds" in the URL (ie sub-pages)

Pageviews: 2,198

Unique page views: 1,730

### UPCOMING WORK:

- Plan upcoming celebratory events for big construction projects
- Planning featured project stories and adding content for highlighted projects for articulation area pages
- Planning site tours for the board, media, and CAAC members

